

The International Association of Universities offers
a unique leadership training programme

LEADING GLOBALLY ENGAGED UNIVERSITIES

NEXT SESSION
PARIS, FRANCE

hosted by ISIT
Institut de Management et de
Communication interculturels

2-7 JUNE 2019

www.iau-aiu.net/Leadership
j.becker@iau-aiu.net



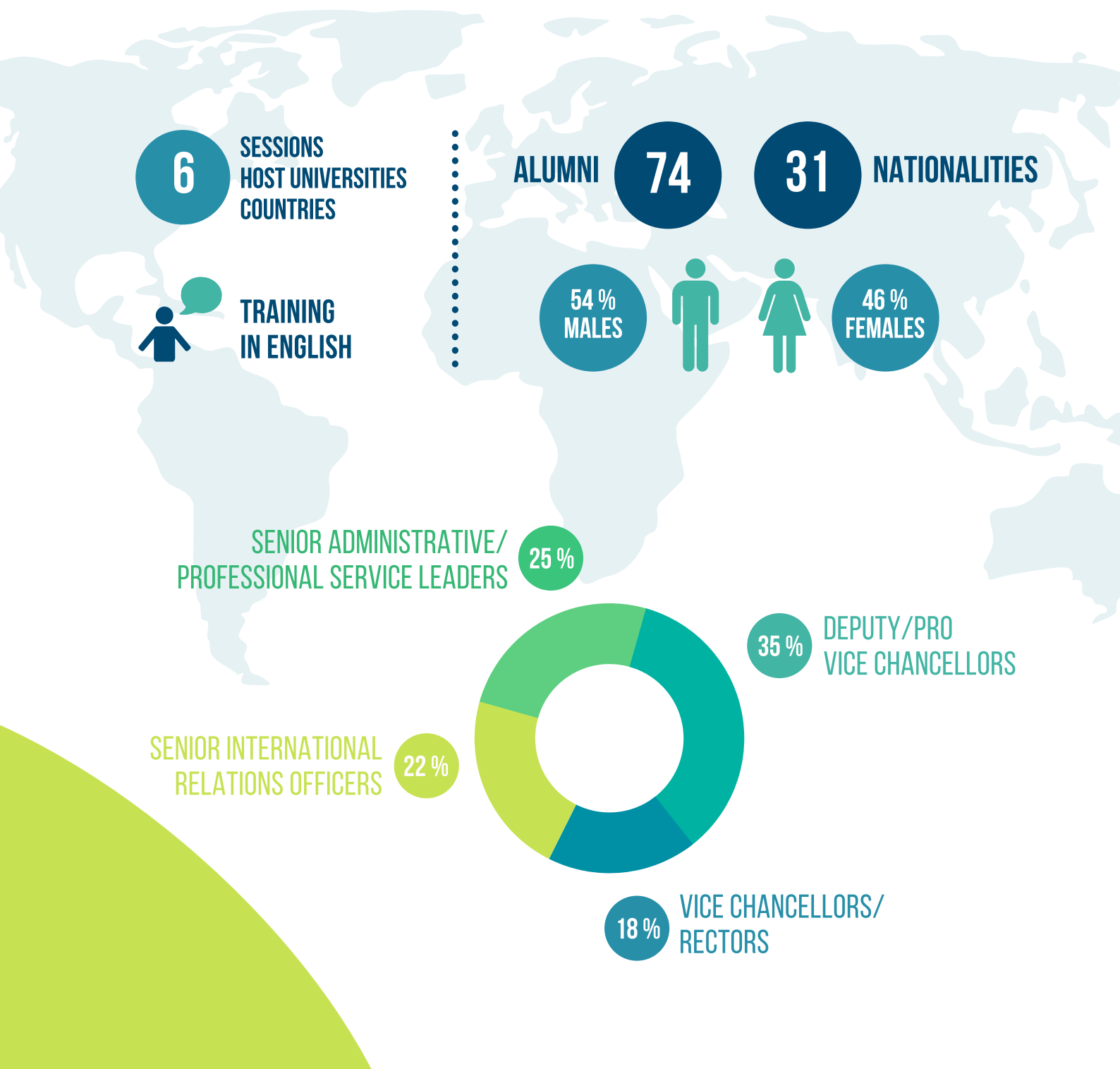
Global Engagement

Strategic planning

Delivering strategic change

LGEU IN A NUTSHELL

Launched in 2015, LGEU is a 5-day leadership development programme that has been running twice a year, hosted by a different IAU Member institution each time. After Malaysia, Ireland, Colombia, Botswana, Canada and Romania, LGEU is heading to France in June 2019 for its seventh edition. Each session is limited to 15-20 participants to ensure effective dialogue and a good group dynamic. LGEU is an inclusive programme whose participants are drawn from various backgrounds, ranging from Heads of Institution, to Vice-Presidents, Deans, but also Academic Department Heads, Registrars and COO's as well as senior professional service leaders. The programme is equally relevant to those with a role which has a specific remit for global engagement as well as for those new to working internationally and seeking an intensive programme of development. The LGEU target audience always seeks gender balance and a broad geographic representation.

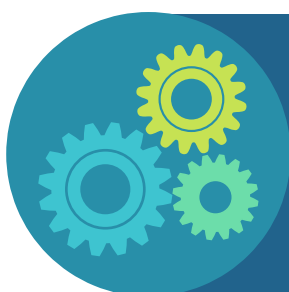


PROGRAMME OUTCOMES

LGEU provides an opportunity for higher education leaders with an international outlook to engage in peer-to-peer learning in a distinctive, internationally-oriented leadership development programme. LGEU offers a real opportunity to gain new insights into higher education trends and practices in a wide range of countries as well as a chance to build new institutional connections.

UNDERSTANDING THE GLOBAL LANDSCAPE

Get a greater appreciation of the key trends shaping Higher Ed and institutions in various contexts and gain international perspectives on national/local challenges and opportunities



MANAGING THE STRATEGIC PLANNING PROCESS

Master the mechanisms that help implement your institutional mission, inform the decision-making and provide structure for evaluating progress and taking corrective action

DEVELOPING YOUR LEADERSHIP SKILLS

Gain a better knowledge of your preferred style of leading and learn more about theory and innovative practices of institutional leadership, management and governance



CREATING AND MANAGING EFFECTIVE TEAMS

Improve your interpersonal management skills and explore the team leader's responsibilities and expectations in enhancing the innovative potential of diverse teams

BUILDING A GLOBAL NETWORK OF PEERS

Create long-term partnerships, connect and share experiences with colleagues from all over the world and learn how they respond differently to common challenges



DELIVERY METHOD

PEER-LEARNING

The workshop is characterised by engaged debates. Participants examine how different institutional leaders share common challenges and the responses they bring to face these. The group's diversity creates a rich and varied dialogue between participants. By sharing their experiences, they learn how to mobilise collective efforts to address immediate issues and proactively shape their institutional future.



PRACTICAL EXERCISES

The programme is based on interactive learning processes and has an experiential approach. Through selected case studies, action learning sessions and coaching simulations, participants review each other's strategic plans and have the opportunity to share specific issues they face with the group that can also make recommendations and learn from this problem solving process.

LEADERSHIP PROFILING

Participants are asked to complete two different surveys whose results will inform their preferred leadership style, areas of strength, and how to gain value from working with a diverse team. This allows them to explore a range of key capabilities associated with effective strategic leadership in an increasingly globalized context.



SITE VISITS

The workshop includes visits to institutions and other organisations. In each session, the location of LGEU serves as the backdrop to expose participants to specific regional developments and the institutional visits offer them first-hand knowledge of the local perspectives and practices.

PROGRAMME DIRECTORS



DR. TOM KENNE is a Director of Ranmore, a niche consultancy in leadership development in HE. He has experience of working with over 130 Higher Education institutions in the UK and increasingly globally. He was the founding director of the UK Top Management Programme (TMP), a leadership development programme for university leaders which he co-directed for 13 years. Prior to moving into consultancy nearly twenty years ago he spent eight years in senior executive positions in learning and development and Human Resources, latterly as HR Director for an international professional service firm. He has also been a full-time academic, spending eight years at the University of Surrey and four years at the University of Technology in Kingston, Jamaica. Tom's academic background has included studying geography and topographic sciences (University of Glasgow), remote sensing and GIS (Imperial College, London) and business management (University of Sussex).



DR. HILLIGJE VAN'T LAND is the Secretary General of the International Association of Universities since 1 September 2017. She has worked at IAU for the past two decades. Initially as a Director and later Deputy Secretary General, she co-supervised the overall programmatic activities and developed IAU membership strategy. She positioned IAU as a lead partner network in the UNESCO Global Action Programme on ESD by promoting the role of higher education and research in addressing the goals set within Agenda 2030. She represents IAU in various Committees including the Council of Europe where she recently contributed to the development of a European Framework for Competences for Democratic Citizenship. Prior to joining IAU, Dr. van't Land taught at the Universities of Groningen, Laval (Québec) and Avignon et les Pays du Vaucluse, where she also headed the Institute for American Universities for 5 years. She holds a PhD in comparative contemporary francophone literature from Groningen University, Netherlands and completed a post doc research period at Laval University (Québec).



JULIETTE BECKER is IAU Programme and Membership Development Officer. She graduated from the French Business School Grenoble Ecole de Management and obtained a double Master's degree in international business from Tecnológico de Monterrey, Mexico. She holds an Advanced Master in international relations from the Paris Institute for International and Strategic Affairs. Prior to joining IAU, she has worked in Communications and Project Management in the cultural and humanitarian sectors. At IAU, she coordinates the leadership development programme Leading Globally Engaged Universities, launched in 2015, and contributes to all IAU initiatives related to the IAU strategic priority on Leadership in Higher Education. She is also in charge of Membership development and contributes to planning, implementing and monitoring the overall Membership strategy. She is also a Co-editor of the IAU Horizons magazine.

ALUMNI TESTIMONIALS



LGEU is a real eye opener. It broadened my perspectives on global engagement and gave me the opportunity to learn from other experienced University leaders.

Lydia Aziato
Dean, School of Nursing and
Midwifery, University of Ghana

LGEU is a way to take a pause in our professional lives to better understand where we, as HE leaders, want to head with our responsibilities in a rapidly changing world, challenging ourselves to perform to the best of our ability.

Sergio Andres Correal
Vice-Chancellor for Institutional Development
Universidad de Boyacá, Colombia



I gained valuable insights into the challenges leaders from different backgrounds share and the solutions implemented in their cultural contexts. LGEU is truly unique: it manages to create diversity while also building unity among participants.

Diana Iancu
Dean, National University of Political Studies
and Public Administration, Romania

I have spent a fascinating week with my peers exploring global engagement. We put a particular emphasis on how you link local commitment of universities to the global agenda. Connecting those two things seems to me as absolutely vital as we redefine the public purposes of universities globally.

Jonathan Grant
Vice President & Vice Principal (Service)
King's College London, United Kingdom



LEADING GLOBALLY ENGAGED UNIVERSITIES

APPLY FOR
NEXT SESSION



PRACTICAL INFORMATION

Dates

2-7 June 2019

Duration

5 days

Location

Paris, France

Host institution

ISIT - Institut de Management et de
Communication interculturels



Intercultural school
Talents pour le monde

Delivery language

English

Programme Coordinator

Juliette Becker

j.becker@iau-aiu.net

REGISTRATION FEES

€ 6,000

Non
Members

€ 3,000

IAU
Members

€ 2,250

Members in
France

Fees include accommodation, meals, programme delivery and materials, unlimited access to the resources on the online portal, a certificate of attendance, and two detailed reports on your leadership profile. International travel is not included.

APPLICATION SUBMISSION

Session limited to 20 participants

Online application

Sign up online

<https://iau-aiu.net/Leadership>

Deadline

5 May 2019



The International Association of Universities (IAU), created under the auspices of UNESCO in 1950, is a membership-based organisation serving the global higher education community through expertise & trends analysis, publications & portals, advisory services, peer-to-peer learning, events, global advocacy.

IAU brings together its Members from more than 130 countries for reflection and action on common priorities. It is an independent, bilingual (English and French), non-governmental organization in an official partner of UNESCO (Associate status).

Servicing its institutional and organizational members and beyond, IAU provides a forum for building a worldwide higher education community, promotes collaboration rather than competition and the exchange of information, experience and ideas.

VISIT OUR WEBSITE

WWW.IAU-AIU.NET

International Association of Universities
UNESCO House, 1, rue Miollis
F-75732, Paris Cedex 15 – France

Contact: j.becker@iau-aiu.net